



## **2 m LC to LC UPC Fiber Optic Patch Cable, 3.0 mm, Duplex, LSZH, OM4 Multimode, Violet**

**50/125µm, 7 ft.**

Part No.: **750882**

EAN-13: 0766623750882 | UPC: 766623750882

Illuminate your network with the brilliance of fiber optic cables, delivering unparalleled performance and security. Harnessing light to transmit data, fiber optic cables offer a myriad of features and benefits, elevating your connectivity experience.

### **Experience Unrivaed Distance:**

With fiber optics, distance is no longer a barrier. Achieve transmission distances exceeding 100 kilometers (km), equivalent to approximately 62 miles, ensuring seamless connectivity across vast expanses.

### **Fortify Your Security:**

Embrace impenetrable security with fiber optics. Unlike traditional cables, fiber optic signals are undetectable remotely, offering unparalleled privacy and protection. Government agencies, financial institutions, and security-conscious businesses find solace in the impervious shield of fiber optics.

### **Eradicate Electromagnetic Interference:**

Bid farewell to electromagnetic interference (EMI) woes. Fiber optic cables are devoid of metallic components, rendering them impervious to EMI. Install them confidently in environments fraught with electrical activity, including utility lines, power-carrying lines, and railroad tracks. Additionally, fiber optics are the

epitome of reliability in regions prone to lightning strikes.

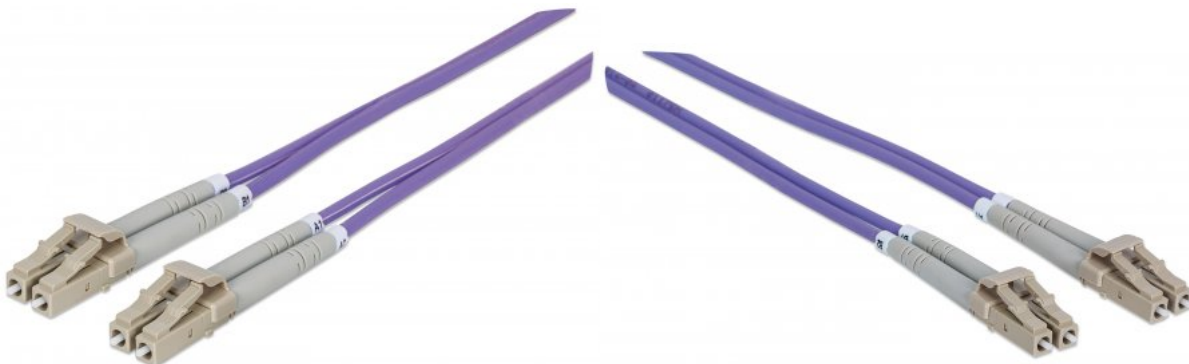
Elevate your network with fiber optic cables—where distance, security, and reliability converge to redefine connectivity. Experience the future of communication, powered by light.

### Features:

- UPC (Ultra Physical Contact) fiber connectors for a better surface finish and improved return loss
- High bandwidth supporting longer distances
- Cost-effective solution
- Perfect for use in Gigabit Ethernet applications
- LSZH
- Lifetime Warranty

### Specifications:

- Diameters:
  - Core: 50  $\mu\text{m}$
  - Cladding: 125  $\mu\text{m}$
- Fiber type: multimode
- Connectors: LC to LC
- Duplex
- Jacket material: LSZH
- Jacket OD: 3.0 mm
- Jacket color: violet
- Ferrule Material: Ceramic
- Polishing: UPC
- Operation Temperature Range:  $-40^{\circ}\text{C}$  to  $+75^{\circ}\text{C}$
- Bending radius: 15 mm
- Return loss:  $\geq 35\text{dB}$
- Insertion loss:  $\leq 0.25\text{ dB}$



For more information on Intellinet products, consult your local dealer or visit [www.intellinet-network.com](http://www.intellinet-network.com).

All names of products or services mentioned herein are trademarks or registered trademarks of their respective owners. Distribution and reproduction of this document, and use and disclosure of the contents herein, are prohibited unless specifically authorized.

